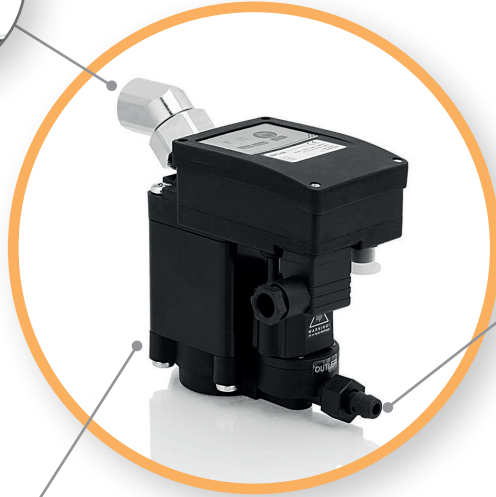


LD200



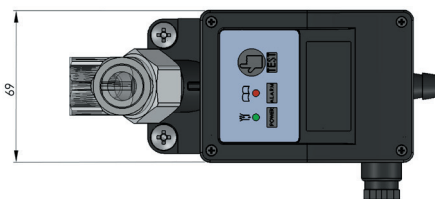
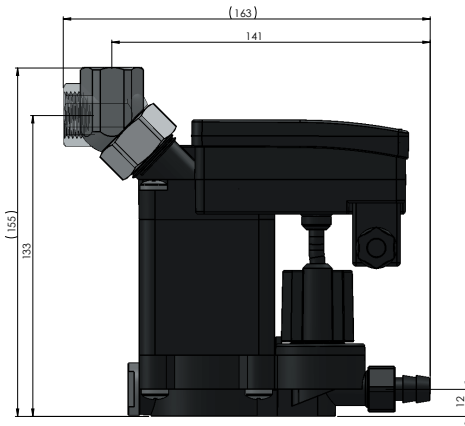
- Easy-lock connection



- Hose holder with flow limiter



- Integrated filter to collect contamination



LD200	230 V	115 V	115 V UL	24 V	24 Vdc
Power supply (±10%)	230 V (50/60 Hz)	115 V (50/60 Hz)	115 V (50/60 Hz)	24 V (50/60 Hz)	24 V dc
Power (during drainage)	10 VA				
Alarm contact	Contact NC/NO: 240V Ac max - 1A / 30V Dc max - 1A				
Working pressure	0,2-16 bar				
Working temperature	+1/+60 °C				
Protection class	IP65 (with connector and correctly assembled basket)				
Electric connection	EN 175301-803 Type B (ex DIN 43650) (Supplied)				
Alarm connection	M12 Code A 4 Poles (Not supplied)				
Nominal flow (m ³ /min) (1)	15				
Nominal drain (lt/h)	10				
Maximum drain (lt/h)	20				
Maximum compressor capacity (m ³ /min)	15				
Maximum dryer capacity (m ³ /min)	30				
Maximum filter capacity (m ³ /min)	150				
Inlet	1 x G1/2"F	1 x G1/2"F NPT	1 x G1/2"F		
Outlet (with flow limiter)	1 x ø12				
Weight (kg)	0,7				
Receiver volume (l)	0,11				
Certificates	CE		CE + UL	CE	
Code	15-352	15-351	15-355	15-353	15-354

(1) = Data refer to 1000 mbar(a), 20° C and 60% relative humidity. Operating pressure 7 bar and outlet temperature of the aftercooler 35° C.

LD200L

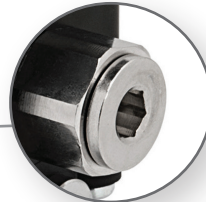
SMART LD200S



• Hose holder with flow limiter



• Easy-lock connection



• Secondary inlet



• Integrated filter to collect contamination

LD200L	230 V	115 V	115 V UL	24 V	24 Vdc	24 Vdc
Power supply ($\pm 10\%$)	230 V (50/60 Hz)	115 V (50/60 Hz)	115 V (50/60 Hz)	24 V (50/60 Hz)	24 V dc	24 V dc
Power (during drainage)	10 VA					10 VA
Alarm contact	Contact NC/NO: 240V Ac max - 1A / 30V Dc max - 1A					/
Working pressure	0,2-16 bar					0,2-16 bar
Working temperature	+1/+60 °C					+1/+60 °C
Protection class	IP65 (with connector and correctly assembled basket)					IP65 (with connector and correctly assembled basket)
Electric connection	EN 175301-803 Type B (ex DIN 43650) (Supplied)					M12 Code A 5 Poles (Not supplied)
Alarm connection	M12 Code A 4 Poles (Not supplied)					/
Nominal flow (m ³ /min) (1)	15					15
Nominal drain (lt/h)	10					10
Maximum drain (lt/h)	20					20
Maximum compressor capacity (m ³ /min)	15					15
Maximum dryer capacity (m ³ /min)	30					30
Maximum filter capacity (m ³ /min)	150					150
Inlet	1 x G1/2"F + 1 x G3/4"M - G1/2"F (**)					1 x G1/2"F + 1 x G3/4"M - G1/2"F (2)
Outlet (with flow limiter)	1 x $\varnothing 12$					1 x $\varnothing 12$
Weight (kg)	0,7					0,7
Receiver volume (l)	0,11					0,11
Certificates	CE		CE + UL	CE		CE
Code	15-372	15-371	15-375	15-373	15-374	15-390

(1) = Data refer to 1000 mbar(a), 20° C and 60% relative humidity. Operating pressure 7 bar and outlet temperature of the aftercooler 35° C.

(2) = For NPT version, minimum purchase lots are required. Get in touch with the Customer Service.

